



**St Louis Shroud Conference
9-12 October 2014**

Biophotonics Hypothesis of the Turin Shroud

**Tony Fleming
Biophotonics Research Institute**



St Louis Shroud Conference 9-12 October 2014



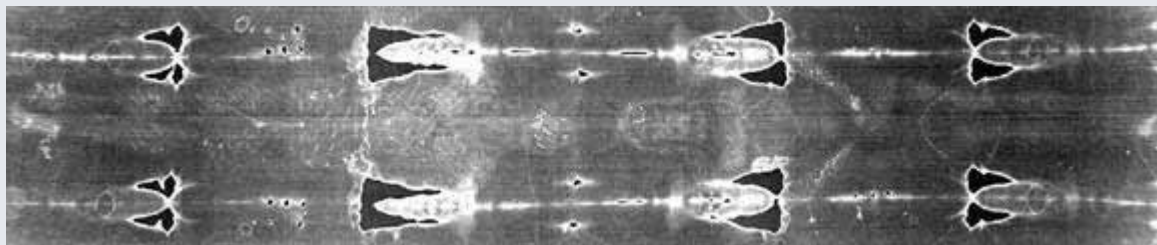
Like an ancient photograph



'Negative'

'Positive'

Dorsal



Ventral

<http://www.tlig.org/en/shroud/>



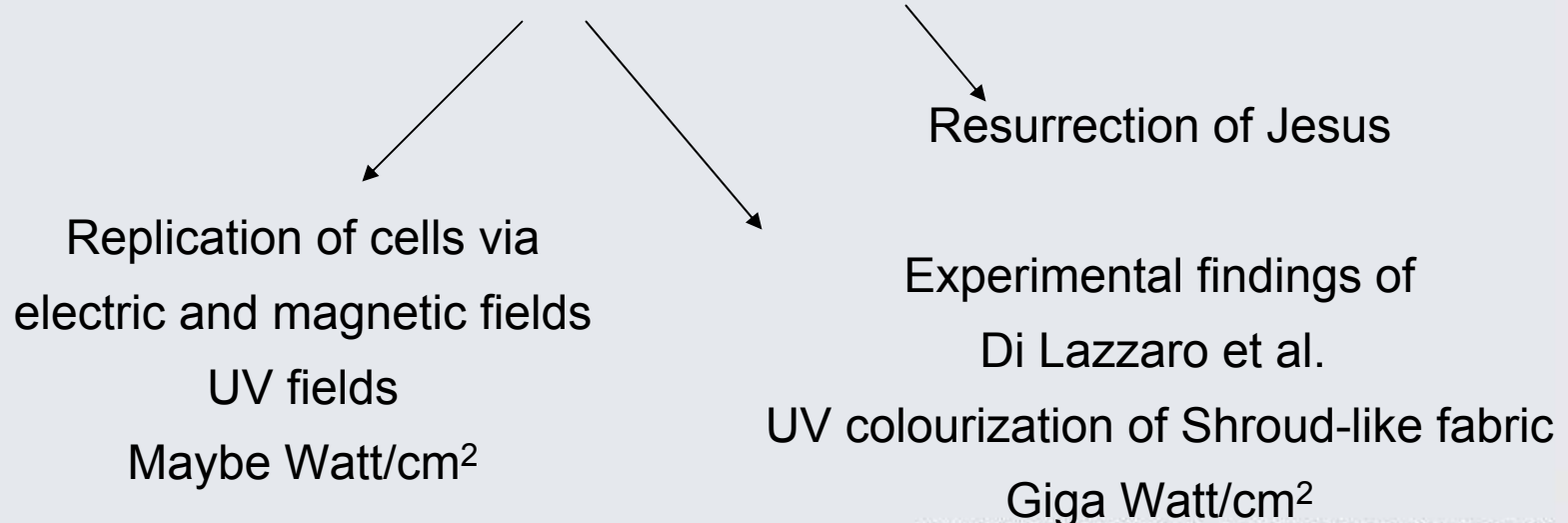
St Louis Shroud Conference 9-12 October 2014

How does the Shroud Image come about?

Is UV involved in two separate but synergistic bioeffects?

- (1) UV Emitted from inside Christ's body and then
- (2) UV Interacts within the surface of the Shroud

What we know and what we don't know





St Louis Shroud Conference 9-12 October 2014

1988 Carbon Dating Results

All three Laboratories announced their results simultaneously at the British Museum on October 13, 1988: the Shroud samples were dated to late Medieval times

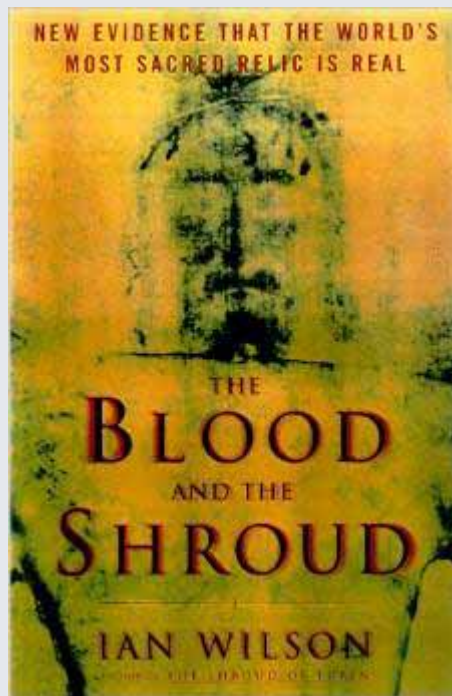




St Louis Shroud Conference 9-12 October 2014

Ian Wilson's Book "The Blood and the Shroud"

In 1998 when book was written there was a 'cacophony' of theories about the physical origin of the Shroud e.g. how paintings, drawings, etc could be made to resemble the Shroud, many ways to copy the Shroud.

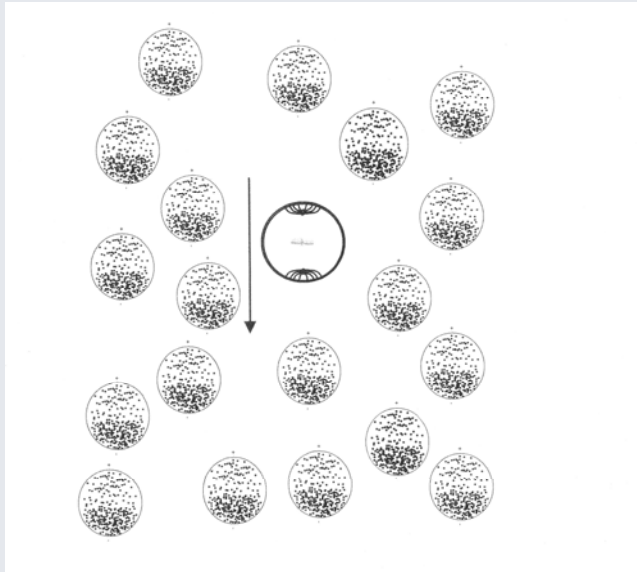


In defence of the Shroud's historical authenticity Ian described a 'multiverse' of different academic disciplines including Art, History. Forensic medicine, physics, chemistry electromagnetics, etc. Further, since 1998, there has been a multitude of other work in defence of the Shroud's historical authenticity. Much of it by various SSG members



St Louis Shroud Conference 9-12 October 2014

Biophotonics



Colony of cells aligning and polarizing to create a biogenic E-field through north-south axis of a central replicating cell

Bioluminescence



<http://newswatch.nationalgeographic.com/2012/04/03/love-and-war-the-essence-of-luminosity/>



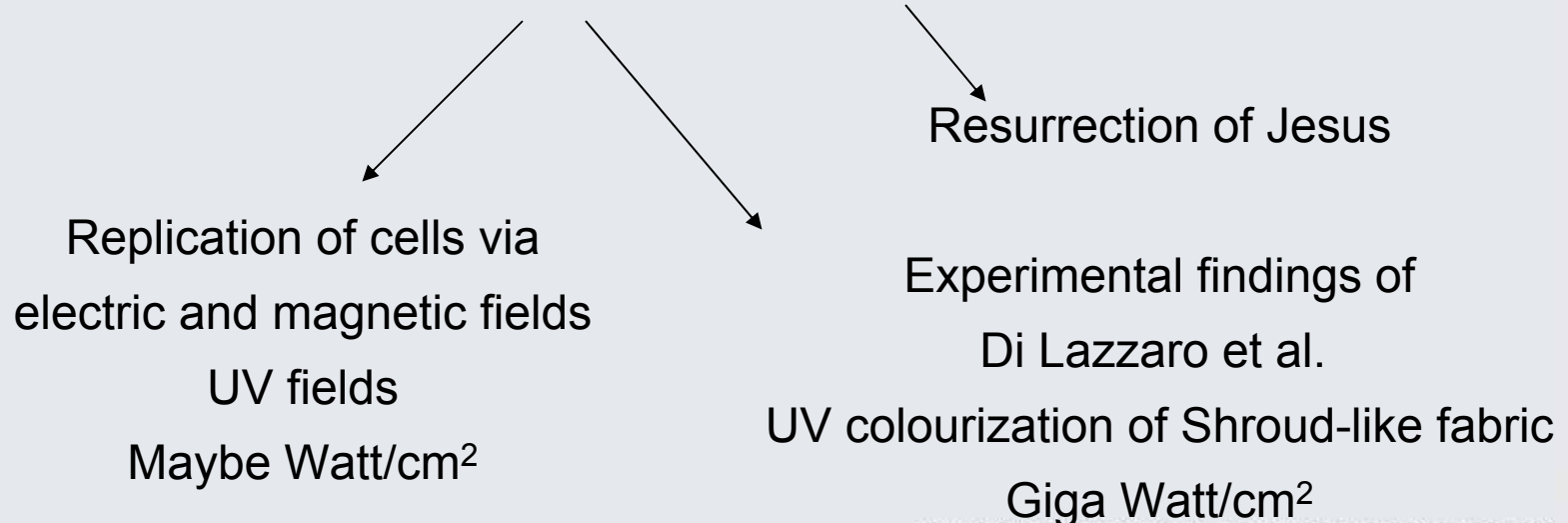
St Louis Shroud Conference 9-12 October 2014

How does the Shroud Image come about?

Is UV involved in two separate but synergistic bioeffects?

- (1) UV Emitted from inside Christ's body and then
- (2) UV Interacts within the surface of the Shroud

What we know and what we don't know





St Louis Shroud Conference 9-12 October 2014

(1) Inside Christ's body

Replication of cells

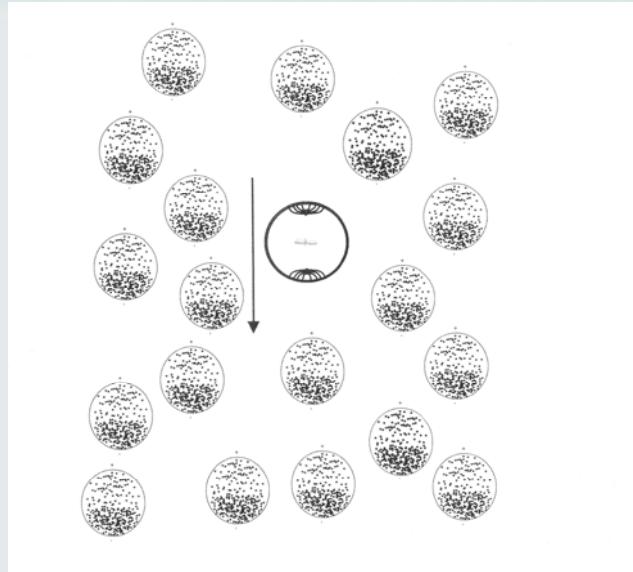
electrostatic (and/or)
magnetostatic fields
induce

UV electromagnetic fields
down axis of chromosomes

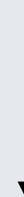


St Louis Shroud Conference 9-12 October 2014

Dielectric Constant, ϵ_0



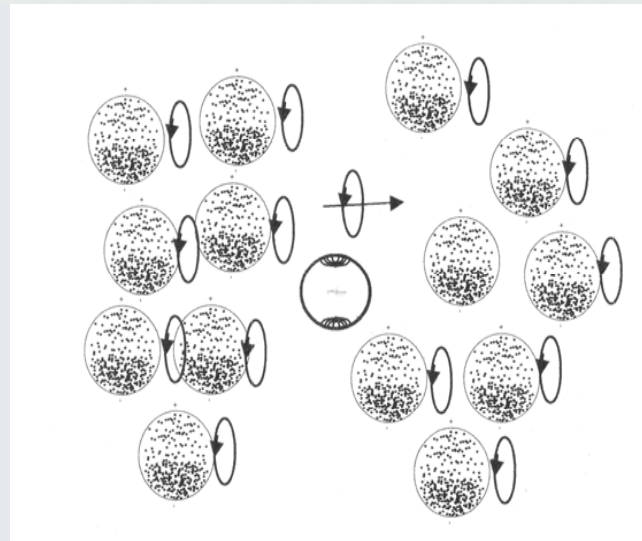
Biogenic E-field



Colony of cells aligning and polarizing to create a biogenic E-field through north-south axis of a central replicating cell whose spindle poles have moved apart to the north south poles after cell nucleus melts to initialize E-field in cytoplasm of central cell



St Louis Shroud Conference 9-12 October 2014



Biogenic H-field

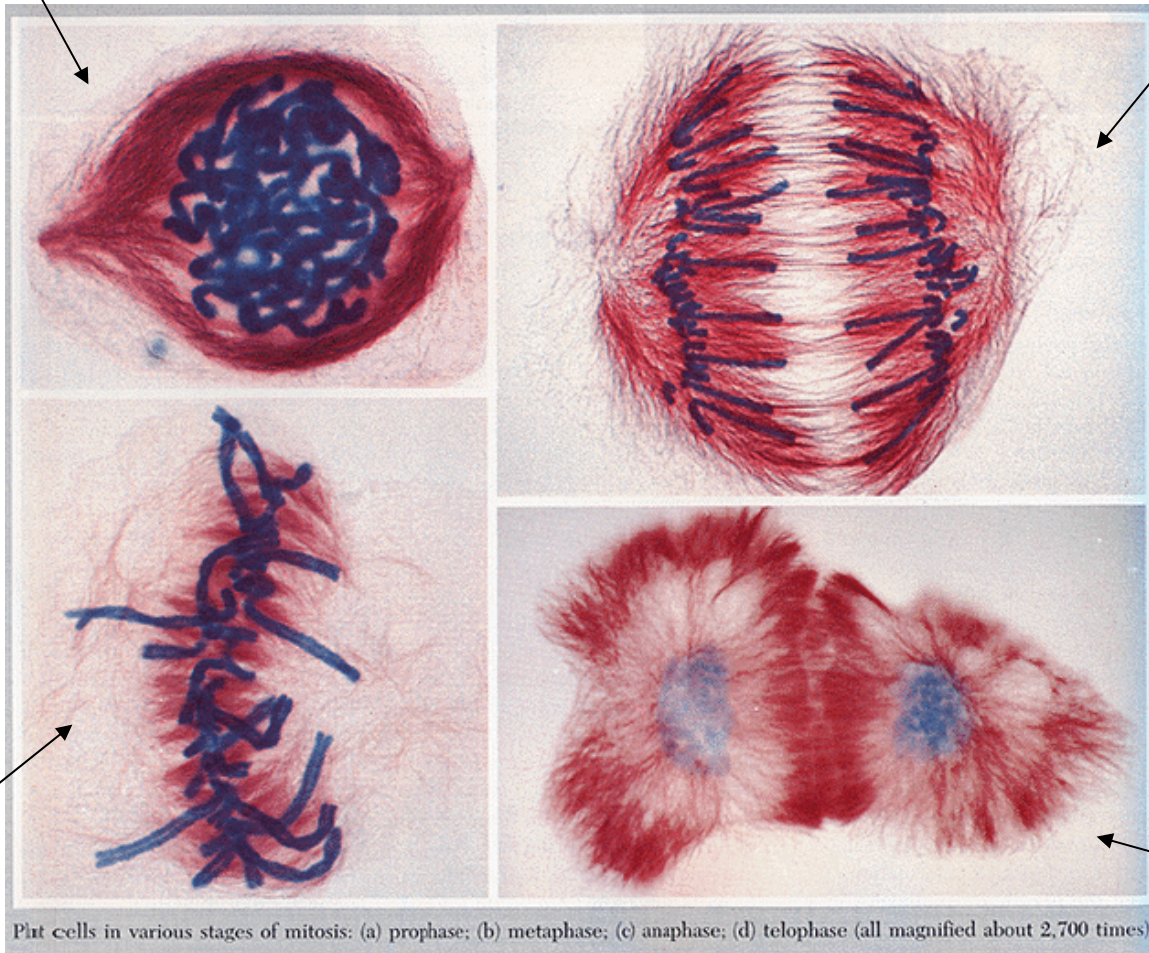


Colony of cells rotating to create a biogenic H-field across east-west plane of a central replicating cell that is emitting a flow of biophotons down axis of chromosome of central cell thus reducing the energy within this central cell enabling metaphase.

Mitosis

Prophase

Anaphase



Metaphase

Telophase

Plant cells in various stages of mitosis: (a) prophase; (b) metaphase; (c) anaphase; (d) telophase (all magnified about 2,700 times).



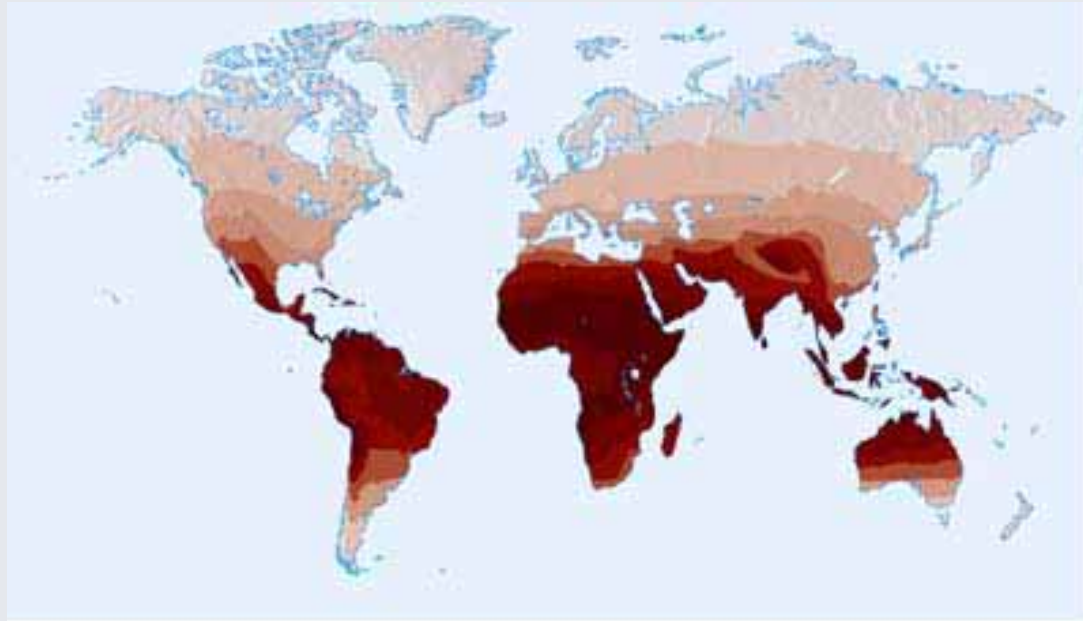
St Louis Shroud Conference 9-12 October 2014

(2) on the surface of the Shroud

How does UV cause an image on the Shroud?



St Louis Shroud Conference 9-12 October 2014



How UV and geographic position affects skin colour



St Louis Shroud Conference

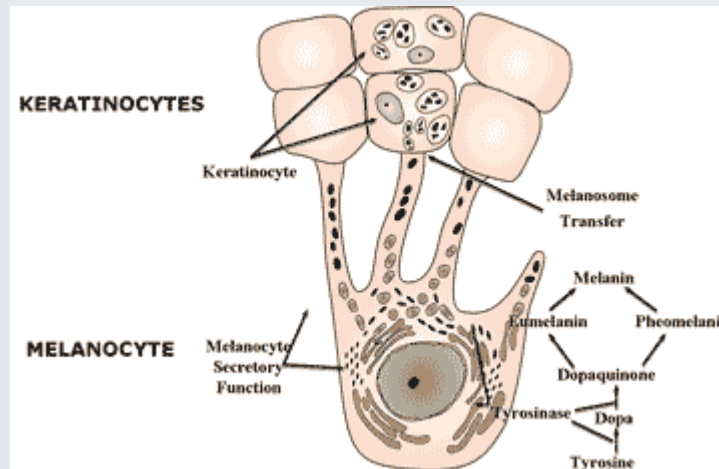
9-12 October 2014



How UV affects skin colour



St Louis Shroud Conference 9-12 October 2014



http://www.dermamedics.com/hyperpigmentation_id60.html

‘Baseball glove’ catching UV in the epidermis



St Louis Shroud Conference 9-12 October 2014



Melanin is found throughout the biological world including plants
Similar immune system response to UV as in humans and mammals



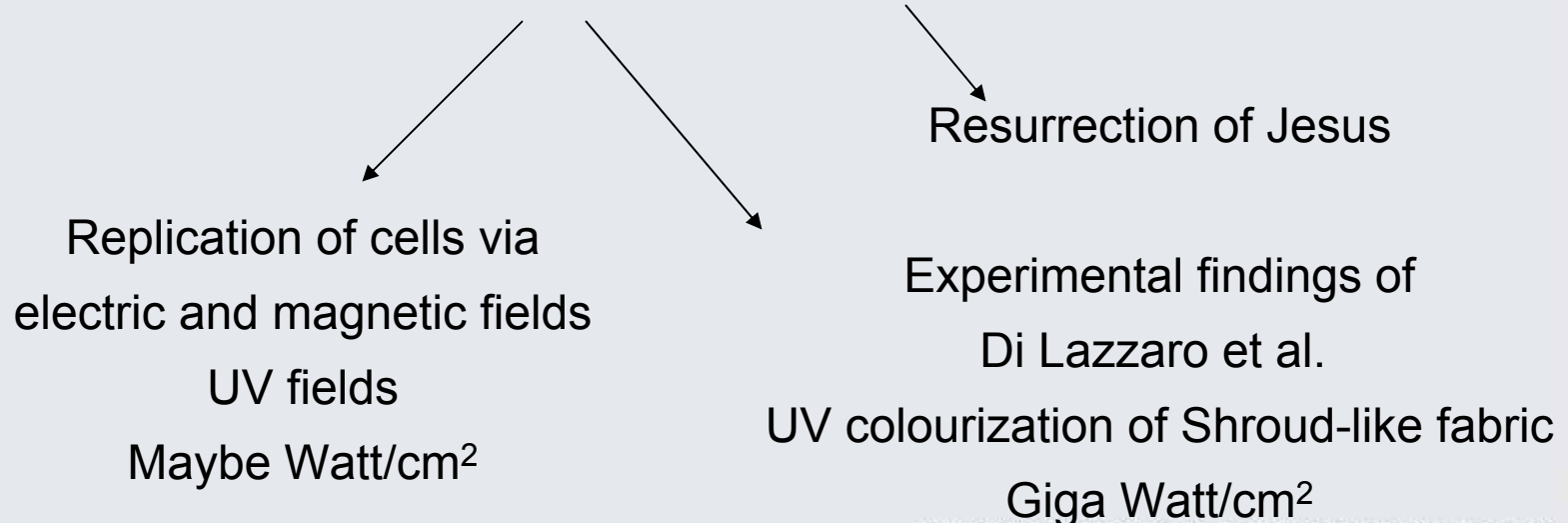
St Louis Shroud Conference 9-12 October 2014

How does the Shroud Image come about?

Is UV involved in two separate but synergistic bioeffects?

- (1) UV Emitted from inside Christ's body and then
- (2) UV Interacts within the surface of the Shroud

What we know and what we don't know





St Louis Shroud Conference

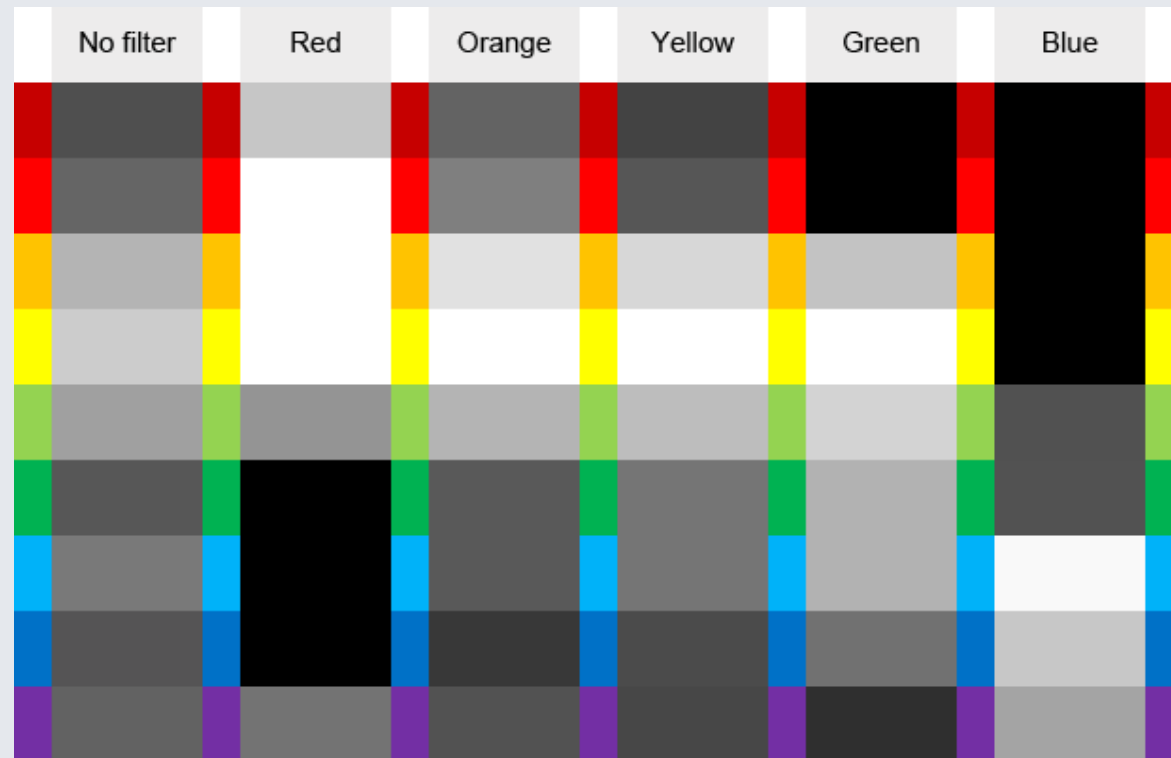
9-12 October 2014

What does blood look like in UV?

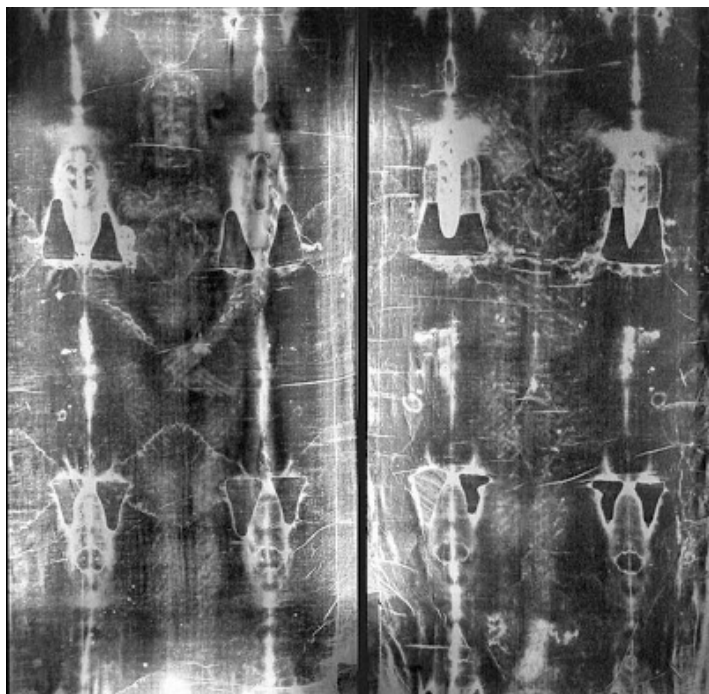


St Louis Shroud Conference 9-12 October 2014

Using Coloured Filters in Black and White Photography



<http://www.photographymad.com/pages/view/using-coloured-filters-in-black-and-white-photography>





**St Louis Shroud Conference
9-12 October 2014**

Biophotonics Hypothesis of the Turin Shroud

**Tony Fleming
Biophotonics Research Institute**



St Louis Shroud Conference 9-12 October 2014

<http://en.wikipedia.org/wiki/Sunburn>



Sunburn peeling. The destruction of lower layers of the epidermis causes rapid loss of the top layers.